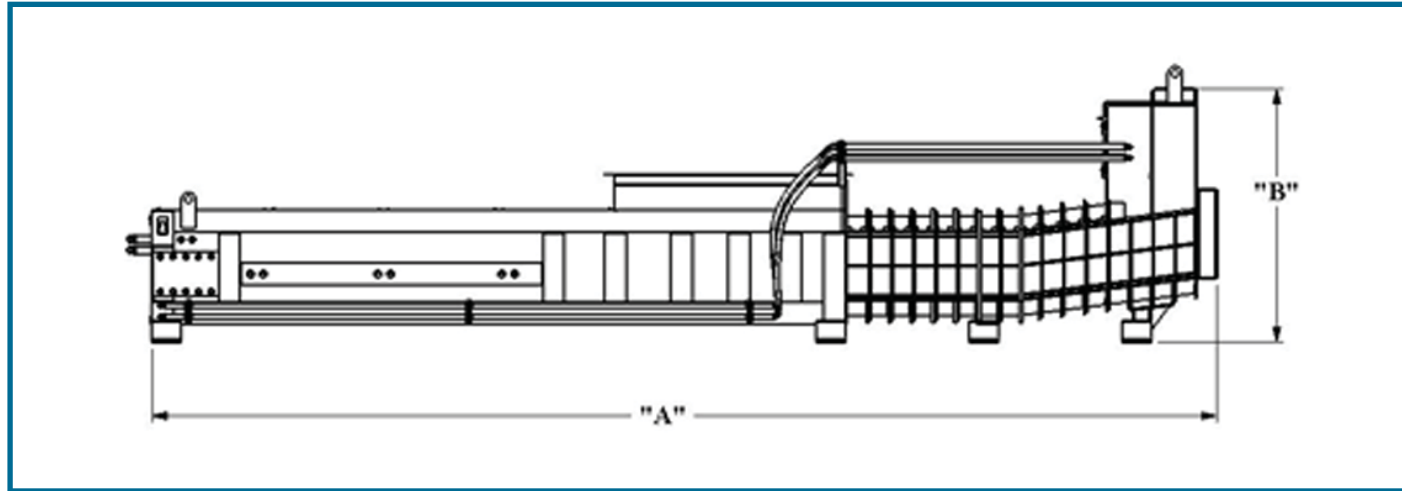


DIMENSIONAL DATA-SPECIFICATIONS



Model	Overall Length "A"	Overall Height "B"	Overall Width	Shipping Weight
4030X-1-7	222 in 5,639 mm	70 in 1,778 mm	50 in 1,270 mm	11,000 lbs. 4,990 kgs
4060X-2-7	240 in 6,096 mm	70 in 1,778 mm	80 in 2,032 mm	16,000 lbs. 7,260 kgs
6260X-2-7	292 in 7,417 mm	70 in 1,778 mm	80 in 2,032 mm	18,200 lbs. 8,255 kgs.
Hydraulic Power Unit	73 in 1,854 mm	54 in 1,372 mm	36 in 914 mm	2,000 lbs. 907 kgs

All Dimensional Data for Reference Only

Due to product improvements, the manufacturer reserves the right to alter, or amend, without notice, any of these specifications and/or dimensions. All machines and accessories have epoxy paint finish. See standard color chart for available epoxy paint color selections.

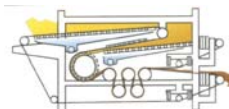


OTHER SERVICES & EQUIPMENT

- ◆ Custom waste handling system designs
- ◆ Experienced Project Team to handle your needs
- ◆ Equipment plan views in 3-D
- ◆ ExIM Bank Financing Options available

BELT PRESSES

- ◆ Belt Filter Presses
- ◆ Gravity Belt Thickeners
- ◆ Complete Testing Capabilities
- ◆ Skid & Mobile Systems



HIGH-DENSITY COMPACTORS

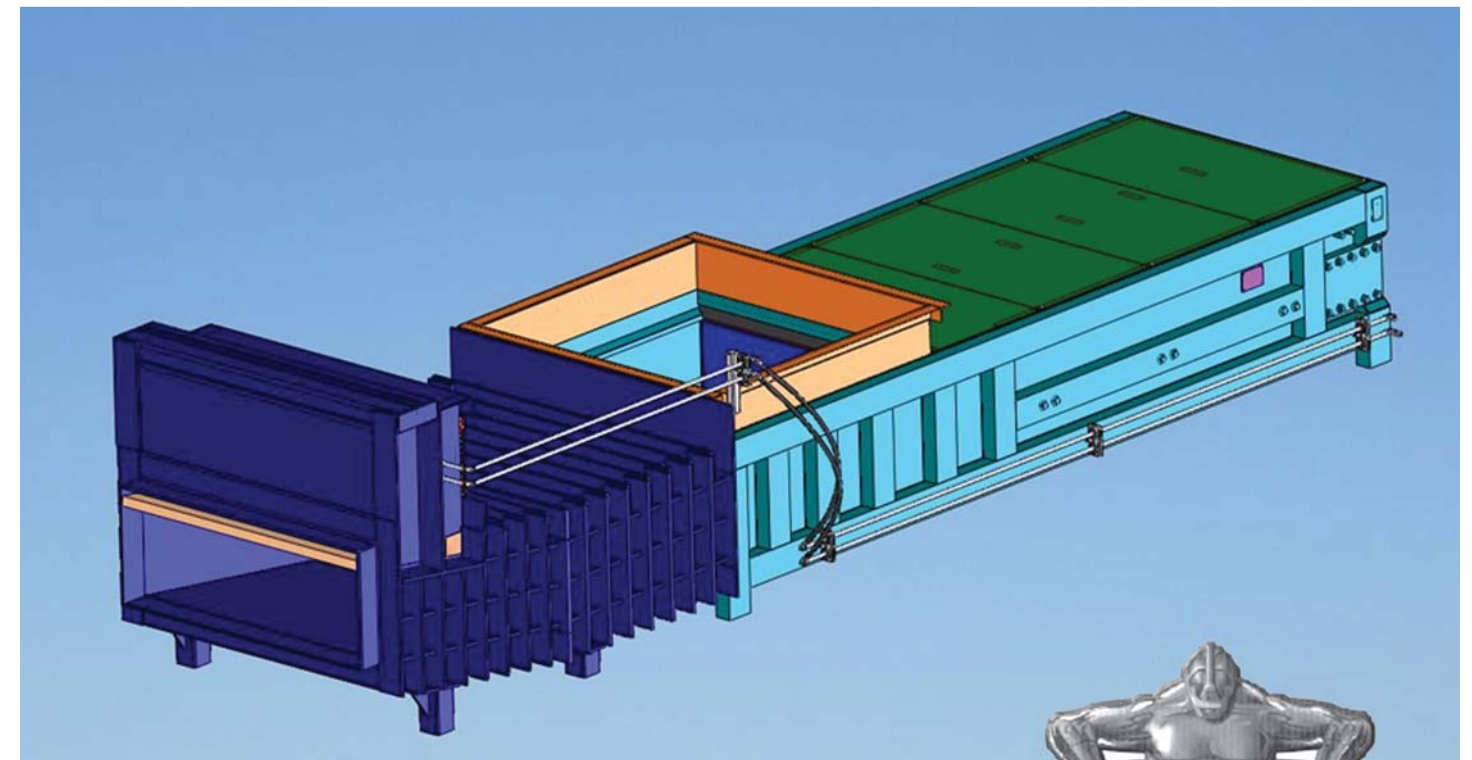
- ◆ Commercial/Industrial
- ◆ Stationary/Self-Contained
- ◆ Vertical Compactors
- ◆ Hydraulic Dumpers
- ◆ Over 32 models available



HIGH DENSITY EXTRUDERS

Dewatering Optimization for Pulp & Paper Mill Waste Streams

- ◆ Sebright Products, Inc -- a leading manufacturer of cost effective and highly efficient "wet" waste handling systems!
- ◆ Hundreds of installations worldwide!
- ◆ The Paper Industry's #1 choice for waste dewatering equipment!
- ◆ Rugged design requiring very little maintenance & energy!
- ◆ Turn your wet waste into a viable energy source!
- ◆ Take control of your environmental responsibilities!



2008 Bright Technologies

SEBRIGHT PRODUCTS, INC.
127 N. WATER ST. , HOPKINS, MI 49328
Ph: (+1) 269.793.7183 Fax:(+1) 269.793.4022

Visit our websites at:
www.brightbeltpress.com
www.sebrightproducts.com
www.hdextrudervideo.com



WET WASTE REDUCTION SOLUTIONS THAT HAVE BEEN PROVEN TO WORK

THE SEBRIGHT ADVANTAGE

WHAT SOLUTIONS CAN WE PROVIDE?

WHERE CAN YOU FIND US?

Superior Performance:

- Liquid Extraction Rates up to 70%
- Volume Reductions up to 50%

Excellent Cost Control:

- Average Savings of 50-60%
- Best R.O.I in the Industry

Recycling Alternatives:

- Waste into Energy
- Waste into Recyclables

Reduced Environmental Liabilities:

- Proper Liquid & Solid Waste Control
- Improved General Housekeeping

◆ Nine Dragons Paper

- ◆ Lee & Man Paper
- ◆ Anhui Shanying Paper
- ◆ Jiangxi Paper
- ◆ Altivity Packaging
- ◆ Smurfit-Stone Corp.
- ◆ International Paper
- ◆ Weyerhaeuser Company
- ◆ Georgia Pacific Corp.
- ◆ Kimberly-Clark Corp.
- ◆ Sonoco Products
- ◆ Atlantic Packaging
- ◆ Wausau-Mosinee
- ◆ US Gypsum Company

◆ Papelera del Sur

- ◆ Cartones America
- ◆ Nippon Paper
- ◆ Fabrica de Papel
- ◆ Stora Enso N.A.
- ◆ Huhtamaki
- ◆ Pratt Industries
- ◆ SFK Pulp & Paper
- ◆ Graphic Packaging Corp.
- ◆ Cascades Group
- ◆ Wisconsin Tissue
- ◆ Abitibi-Bowater
- ◆ Sonoco do Brazil



Don't be
fooled by
imitators!

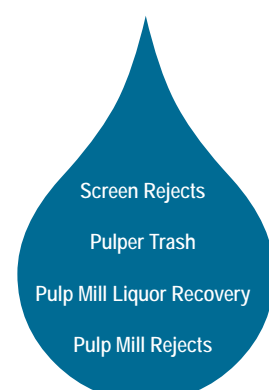
SAVINGS



WHY ARE WE SELECTED?

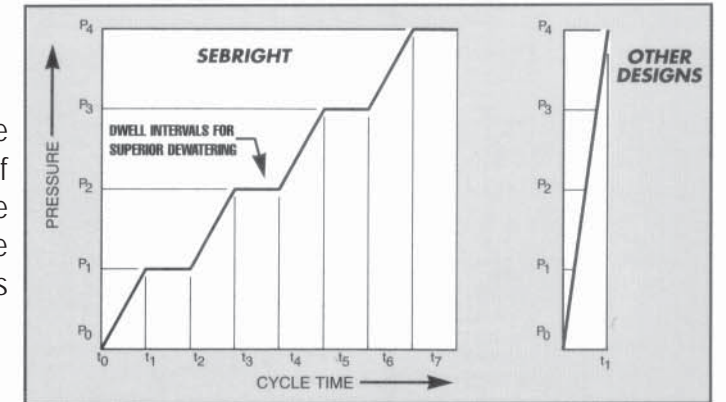
- ◆ 100% Satisfaction Guaranteed
- ◆ Tailored to Your Application & Needs
- ◆ Superior Equipment Design
- ◆ Optimal Waste Dewatering Performance
- ◆ Paper Industry Knowledge & Experience

APPLICATIONS



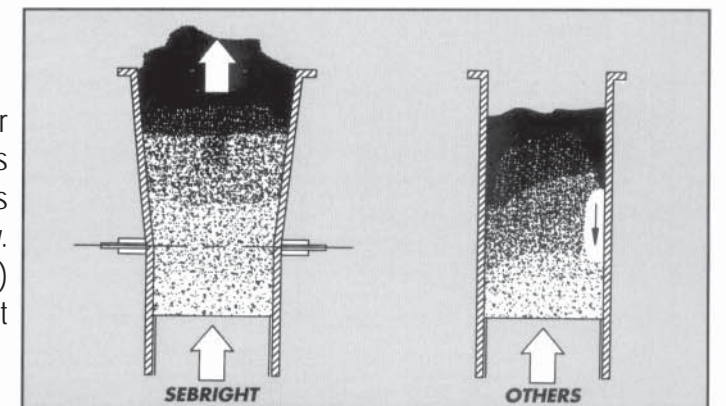
PROGRESSIVE COMPRESSION FOR SUPERIOR DEWATERING

Only Sebright products offers the [patented] benefit of a time interval managed compression cycle. Programmed steps of increasing pressure, combined with pauses as each force level is reached, permit optimum expulsion of liquid from the innermost section of the mass. Other "single stroke" designs are noticeably less efficient.



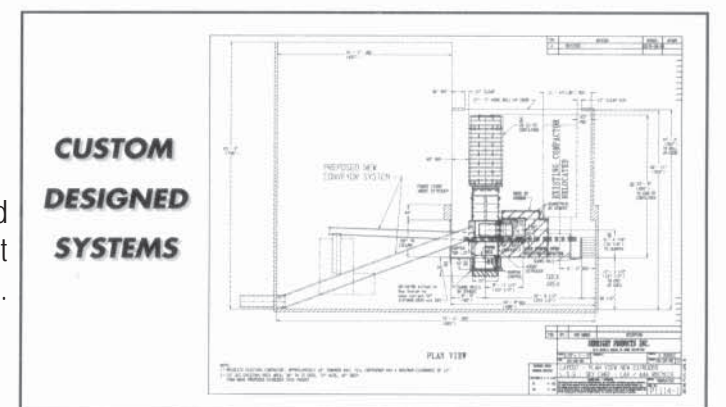
SELF-RELIEVING DISCHARGE

The discharge section of the Sebright High Density Extruder is outwardly flared. This exclusive [patented] benefit allows internal pressure to be gradually dissipated as the "log" of solids approaches the discharge opening, thereby promoting free flow. Jamming problems occur with straight wall designs (at right) when ram pressure cannot overcome high friction forces present along the chamber's inner surfaces.



COMPLETE SYSTEM DESIGN AND INSTALLATION

Sebright Products has been designing, fabricating, installing and servicing waste handling systems since 1984. We can assist with all phases from planning through installation and start-up. We now offer equipment layout drawings in 3-D.



ON-LINE TECHNICAL SUPPORT VIA THE INTERNET

Users of Sebright Products High Density Extruders have access to "optional" on-line factory diagnostic assistance via an internet connection. You can speak by telephone with a factory engineer to discuss the operation of your Extruder while he has an on-line screen display of all critical operating parameters transmitted via an ether net module directly from your machine.

